

THE WEEK AHEAD

January 12-16 2026

MONDAY: PAC Meeting 6pm

TUESDAY:

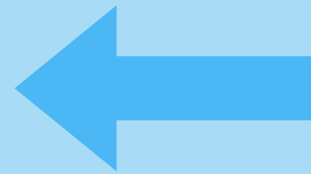
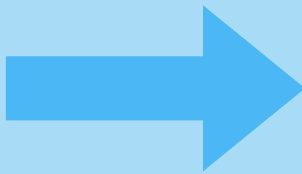
WEDNESDAY: Breakfast Club Even Divisions 2, 4, 6, 8, 10, 12, 14, 16, 18, 20, 22, 24, 26

THURSDAY:

FRIDAY: Wear your Ferris wear

PAC NEWS

Term 2 Hot Lunch Orders Now Open.
Place your orders through Munch-a-Lunch.



Monday, January 12 - PAC Meeting - at 6:00pm in the Lab.
Child minding will be provided.

Sunday, January 18 - Final Day to order Ferris Wear



This is a PAC Fundraising Event. For questions or inquiries, please contact: FerrisPAC@gmail.com

Please note: All sales are final – no refunds or exchanges. The vendor's logo will appear on the nape of the clothing.

IMPORTANT DATES AHEAD

Jan 14: Breakfast Club - Even Divisions

Jan 20: Hat/Toque Day

Jan 23: Hot Lunch - Pizza

Feb 6: Hot Lunch - Libby's Kitchen

Feb 20: Hot Lunch - Subway

Jan 21: Breakfast Club - Odd Divisions

Feb 12: Heart Day

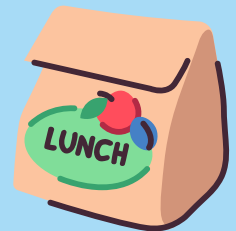
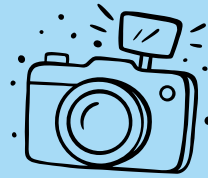
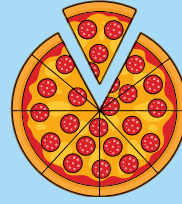
Jan 28: Breakfast Club: Even Divisions

March 3: Class Photo Day

March 6: Hot Lunch - Sushi Lover

March 13: Backwards day (wear your clothing backwards)

March 16-27: SCHOOL CLOSED FOR SPRING BREAK



HEALTHY LUNCHES

We kindly ask that students come to school in the morning with a healthy lunch and utensils packed and ready to go.

Please do not drop off at the office.

These deliveries can cause disruptions and make it harder for students to settle into lunch on time.

Your support helps us create a more organized and healthy lunchtime experience for all students.

Thank you for your cooperation and understanding!



EARLY WARNING: 604-668-6546

OFFICE: 604-668-3538

EMAIL: Ferris@sd38.bc.ca

www.ferris.sd38.bc.ca





BREAKFAST CLUB

Breakfast Club is a chance for students to come together, enjoy a light breakfast, and start the morning in a warm, welcoming space.

**Breakfast Club will run every Wednesday
from 8:00-8:30am in the gym.**

**Wednesday January 14 EVEN Divisions:
2, 4, 6, 8, 10, 12, 14, 16, 18, 20, 22, 24, 26**

**Wednesday January 21 ODD Divisions:
1, 3, 5, 7, 9, 11, 13, 15, 17, 19, 21, 23, 25**

**Wednesday January 28 EVEN Divisions:
2, 4, 6, 8, 10, 12, 14, 16, 18, 20, 22, 24, 26**

For safety and supervision, families with children in Kindergarten to Grade 3 are asked to have a parent or guardian stay until students head to class. Breakfast Club offers a light, grab-and-go breakfast for students only

We can't wait to share mornings filled with good food, great company, and community spirit!